

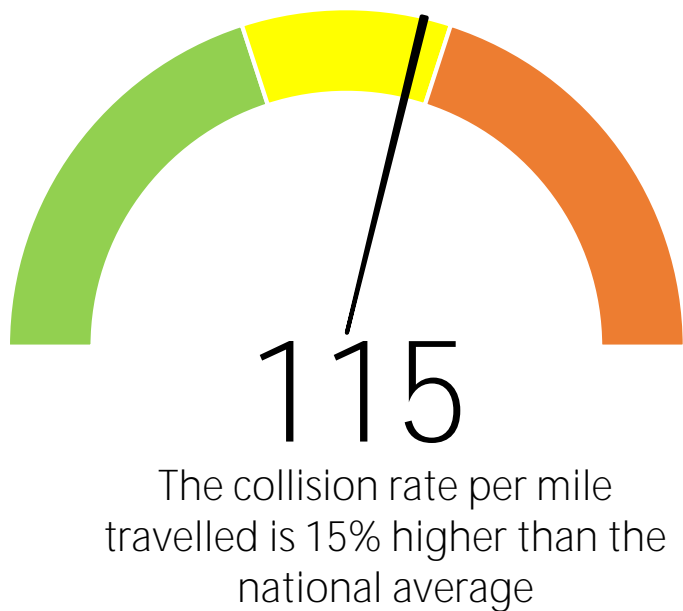
# POLICE FORCE ROAD SAFETY DASHBOARD

## Northumbria Police

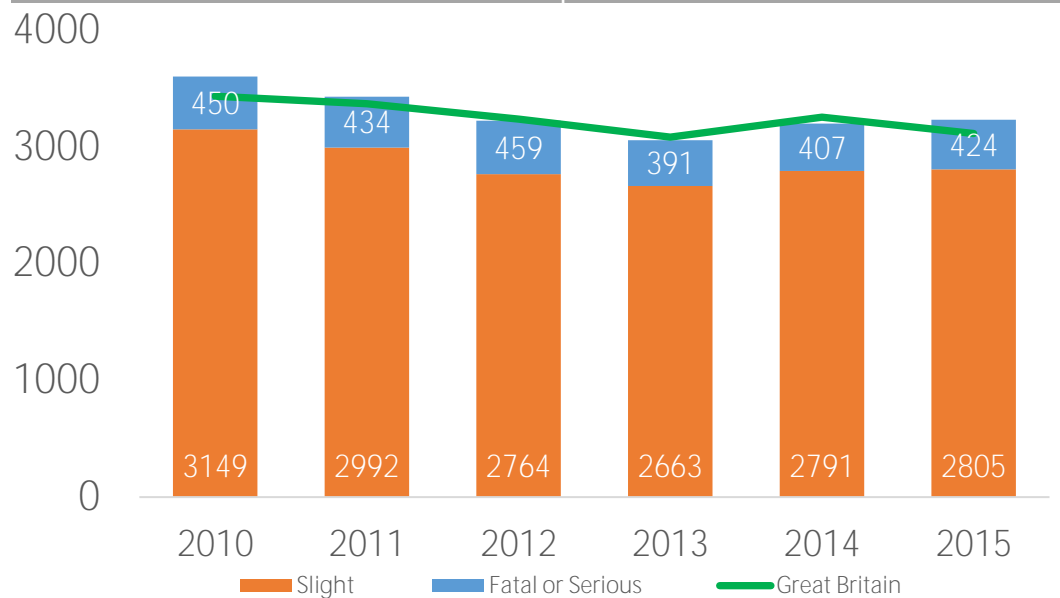


This dashboard analyses both collisions and the drivers involved in them on the roads in Northumbria. It also uses national figures to allow a comparison of road risk against typical values seen elsewhere in Great Britain and produces a 100-based index for comparison purposes. Figures above 100 indicate a higher rate than the Great Britain average and the opposite is true for values below 100. Comparisons are based on traffic levels within each force area. Collisions involving casualties of all severity are used in the analysis, although there may be a differentiation for the most serious collisions where someone is killed or seriously injured.

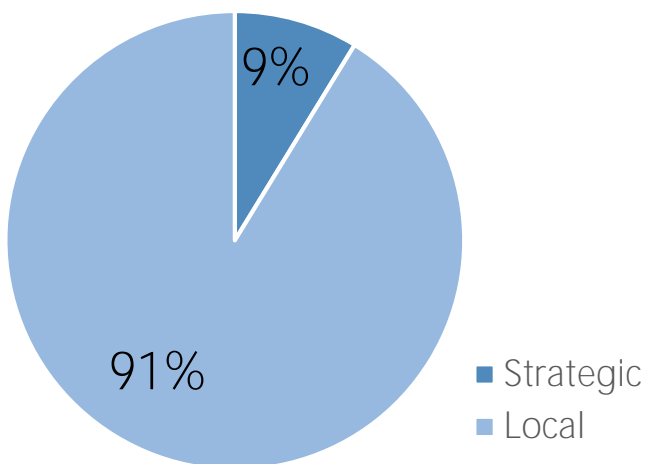
### Collision Index



### Collisions per Year



### Collisions - Strategic vs Local Roads



### Collisions by Speed Limit

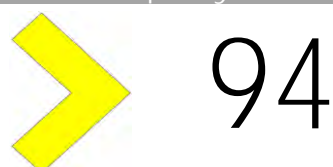


### Injury Collisions Involving (100 = national average, <100 = lower than average, >100 = higher than average)

Drink Driving  
111 drivers per year



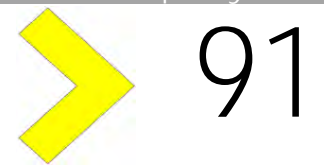
Mobile Phone  
8 drivers per year



Speeding  
79 drivers per year

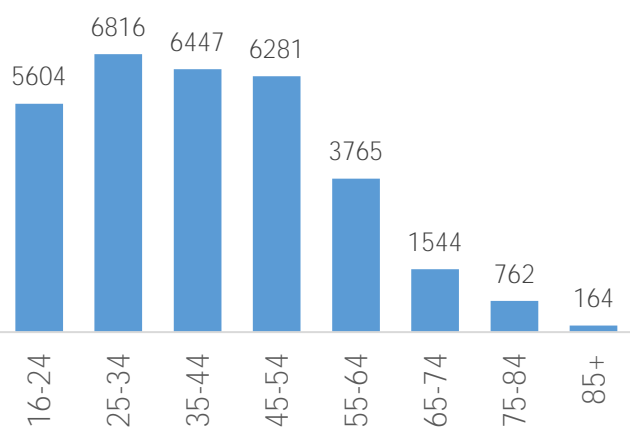


Red Light  
40 drivers per year

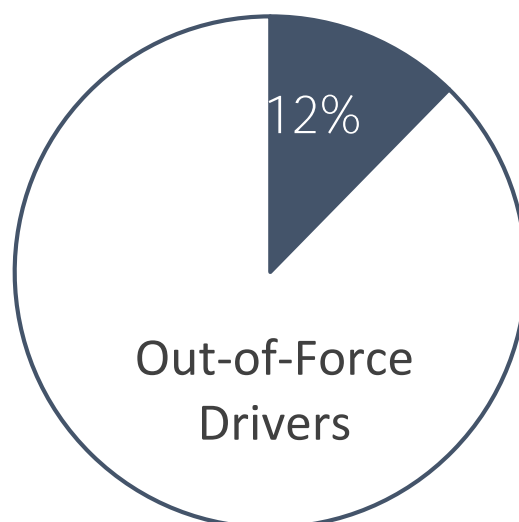


### Driver Profile - Drivers Involved in Collisions

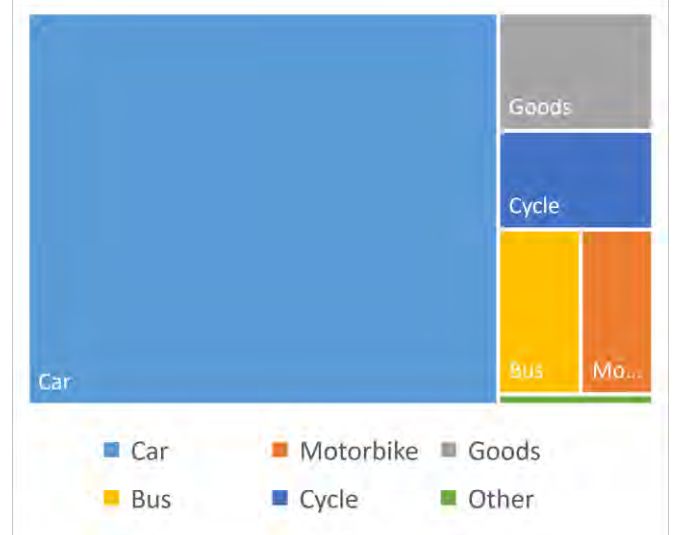
#### Driver Age



#### Driver Home



#### Vehicle Type

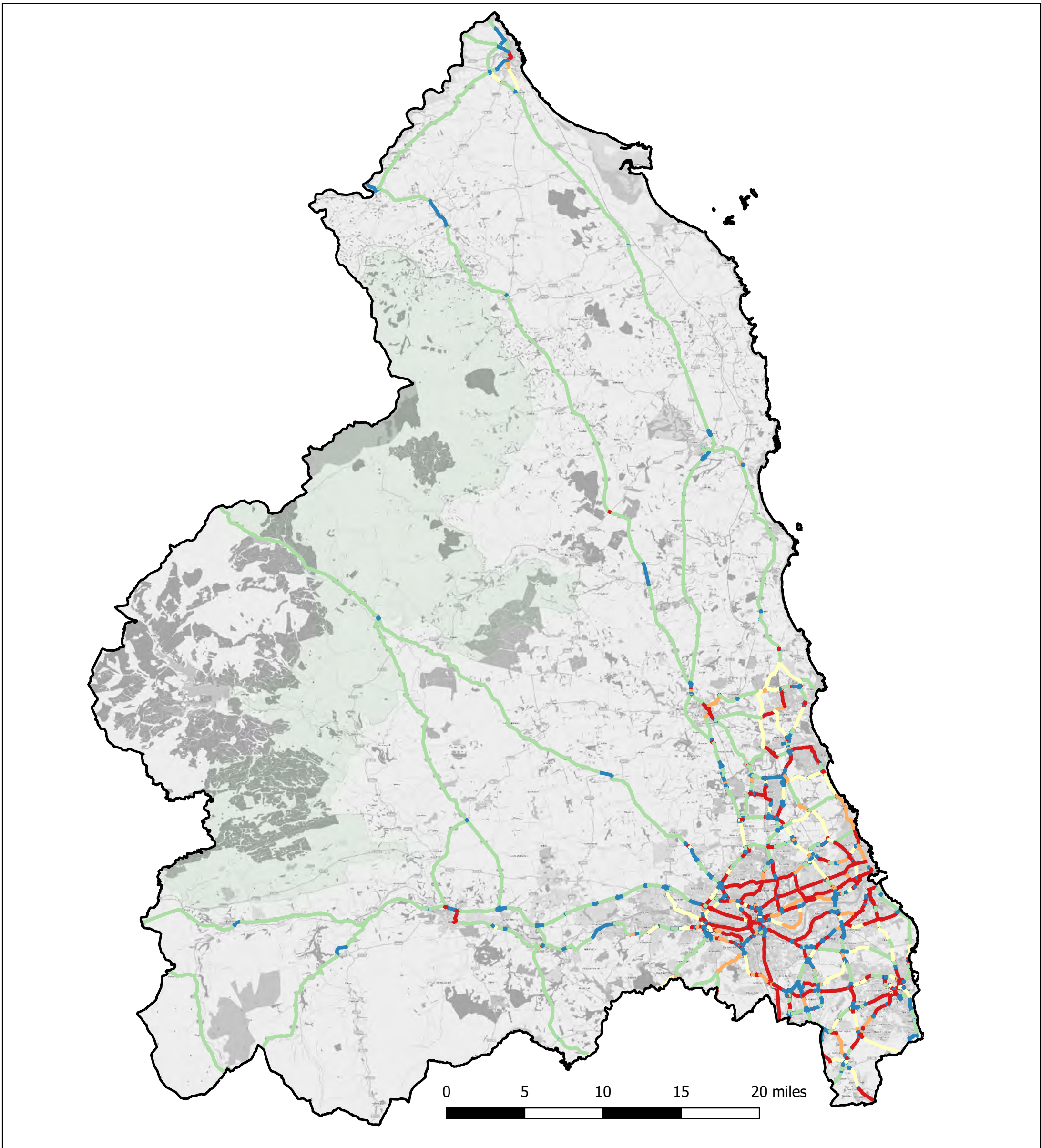


<http://www.jenoptik.co.uk/pcc>

DATA AND DESIGN BY



# Northumbria Police



## Crash Rate Index

- Insufficient Data
- 0 to 70
- 71 to 100
- 101 to 130
- 131 and over

