

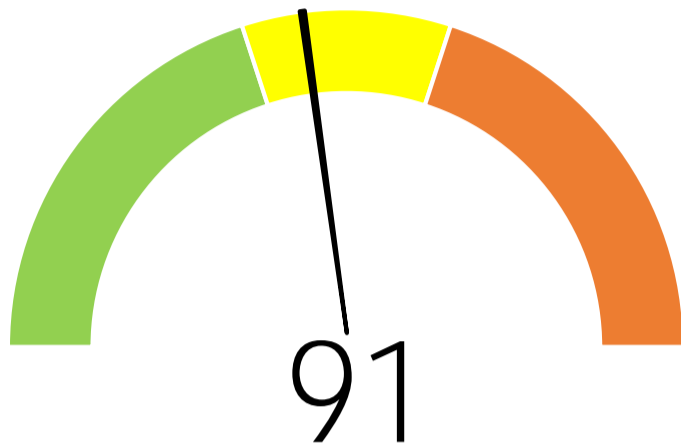
POLICE FORCE ROAD SAFETY DASHBOARD

Durham Constabulary

This dashboard analyses both collisions and the drivers involved in them on the roads in Durham. It also uses national figures to allow a comparison of road risk against typical values seen elsewhere in Great Britain and produces a 100-based index for comparison purposes. Figures above 100 indicate a higher rate than the Great Britain average and the opposite is true for values below 100. Comparisons are based on traffic levels within each force area. Collisions involving casualties of all severity are used in the analysis, although there may be a differentiation for the most serious collisions where someone is killed or seriously injured.

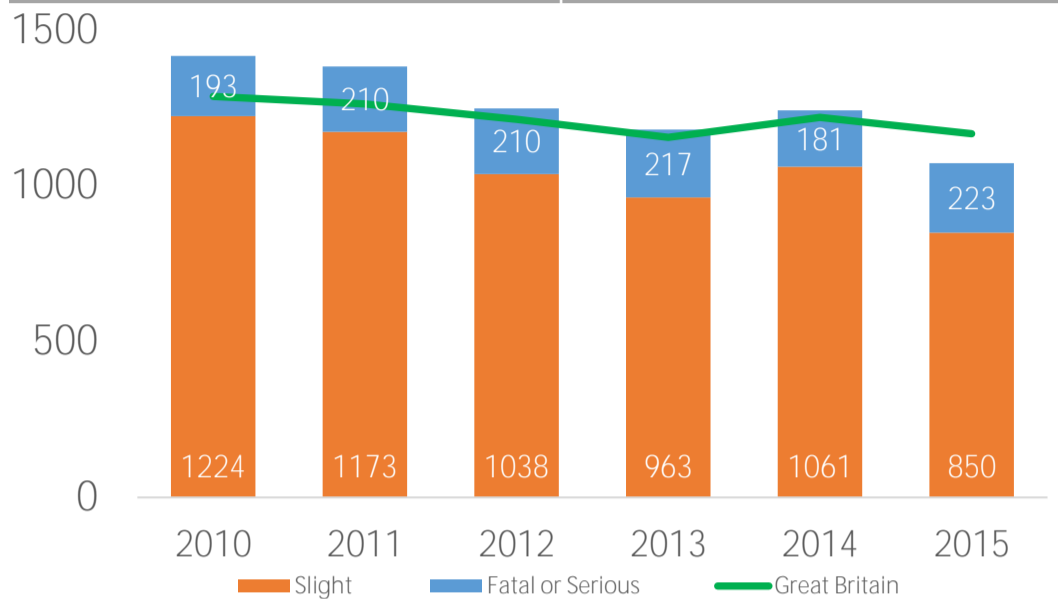


Collision Index

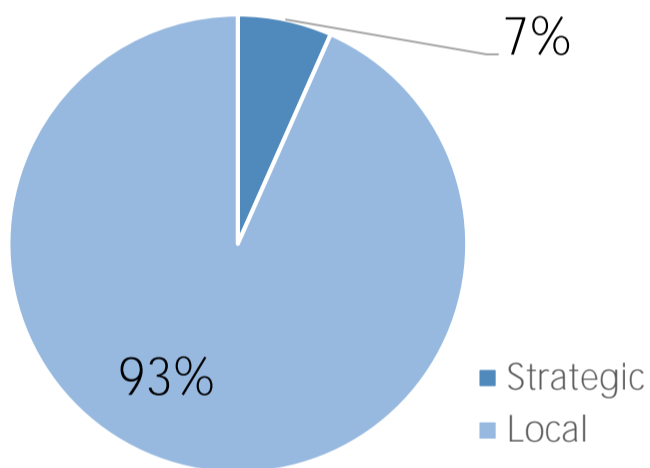


The collision rate per mile travelled is 9% lower than the national average

Collisions per Year



Collisions - Strategic vs Local Roads



Collisions by Speed Limit



Injury Collisions Involving (100 = national average, <100 = lower than average, >100 = higher than average)

Drink Driving
62 drivers per year

Mobile Phone
5 drivers per year

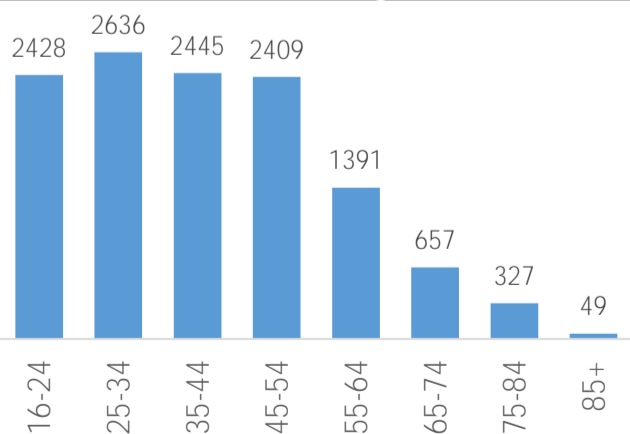
Speeding
74 drivers per year

Red Light
9 drivers per year

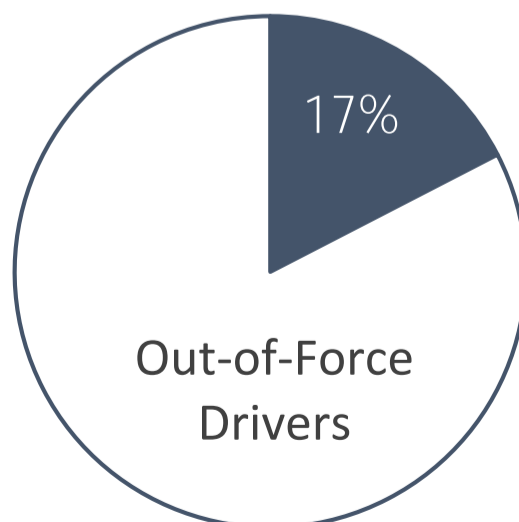


Driver Profile - Drivers Involved in Collisions

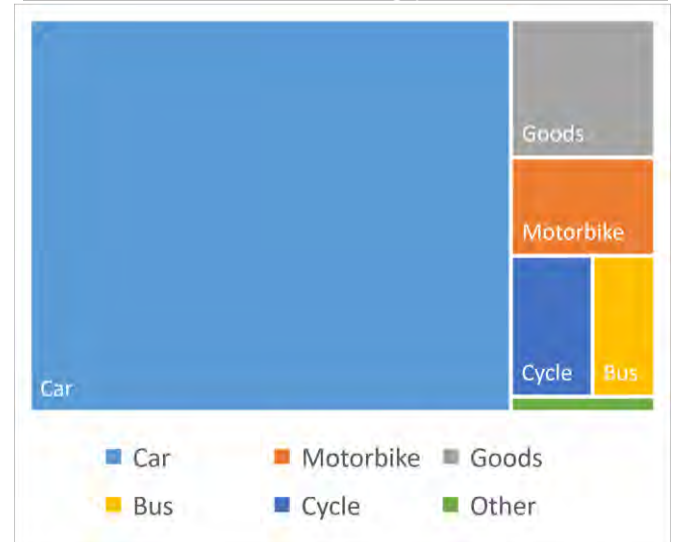
Driver Age



Driver Home



Vehicle Type

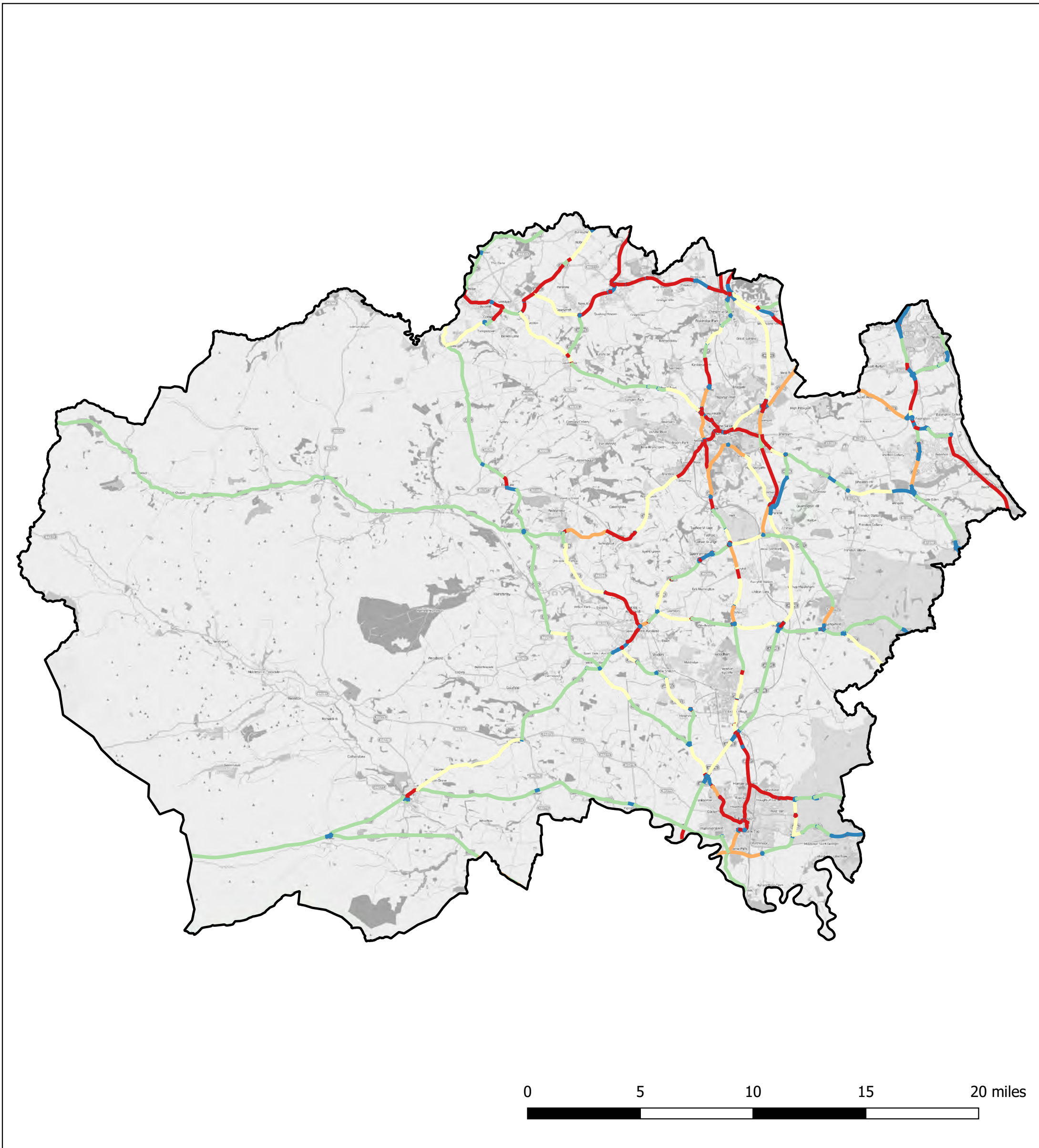


<http://www.jenoptik.co.uk/pcc>

DATA AND DESIGN BY



Durham Constabulary



Crash Rate Index

- Insufficient Data
- 0 to 70
- 71 to 100
- 101 to 130
- 131 and over

