

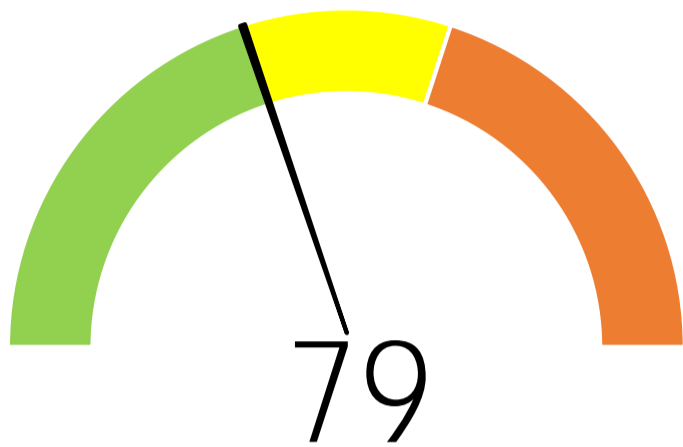
# POLICE FORCE ROAD SAFETY DASHBOARD

## Cumbria Constabulary



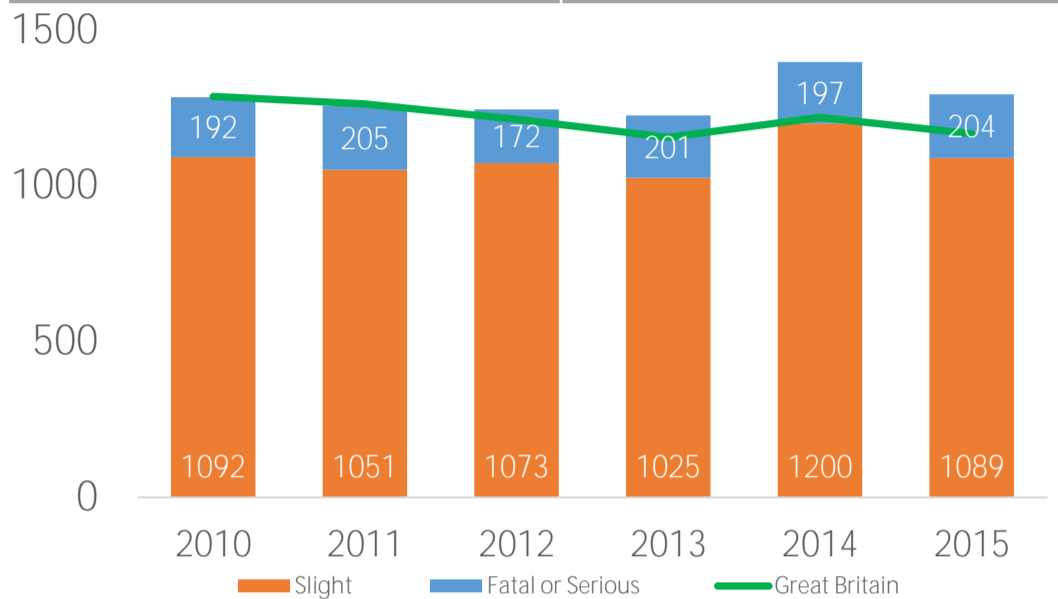
This dashboard analyses both collisions and the drivers involved in them on the roads in Cumbria. It also uses national figures to allow a comparison of road risk against typical values seen elsewhere in Great Britain and produces a 100-based index for comparison purposes. Figures above 100 indicate a higher rate than the Great Britain average and the opposite is true for values below 100. Comparisons are based on traffic levels within each force area. Collisions involving casualties of all severity are used in the analysis, although there may be a differentiation for the most serious collisions where someone is killed or seriously injured.

### Collision Index

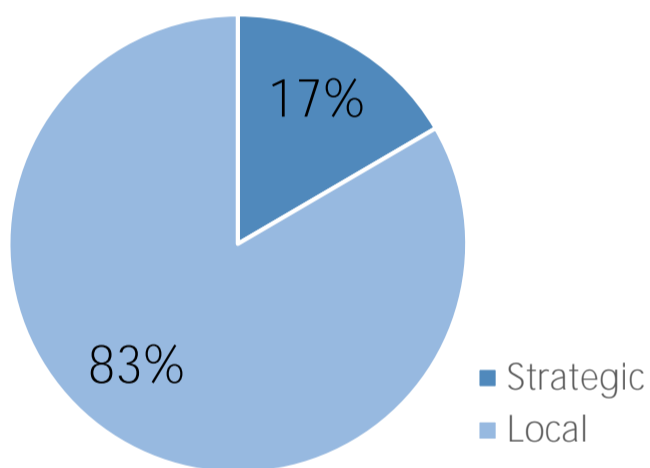


The collision rate per mile travelled is 21% lower than the national average

### Collisions per Year



### Collisions - Strategic vs Local Roads



### Collisions by Speed Limit



### Injury Collisions Involving (100 = national average, <100 = lower than average, >100 = higher than average)

Drink Driving  
39 drivers per year



Mobile Phone  
5 drivers per year



Speeding  
45 drivers per year

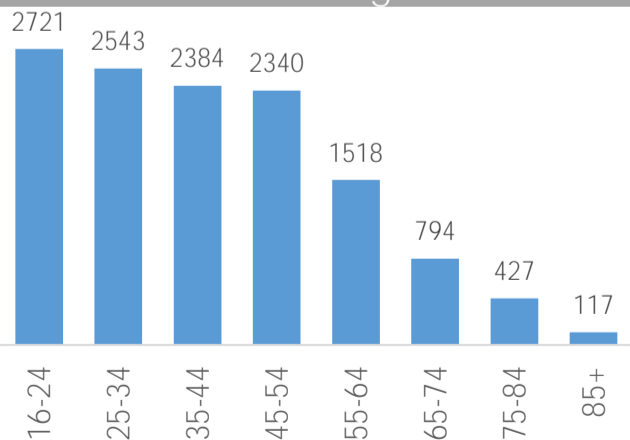


Red Light  
10 drivers per year

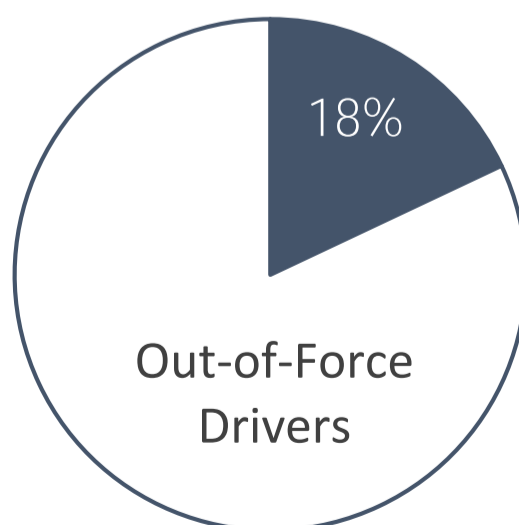


### Driver Profile - Drivers Involved in Collisions

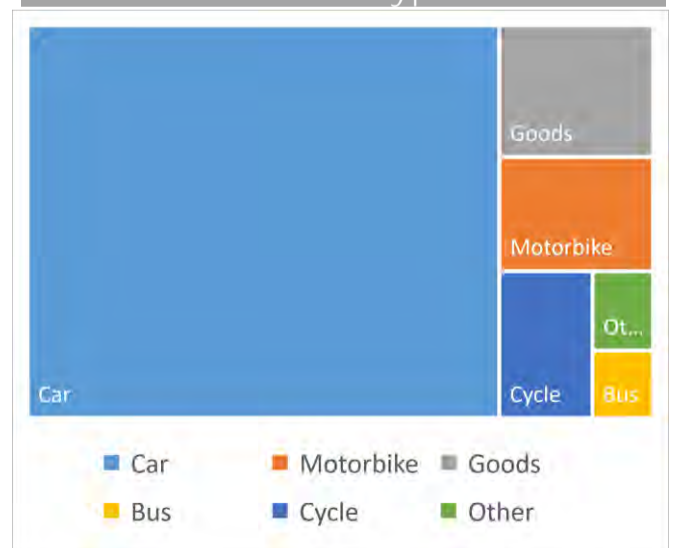
#### Driver Age



#### Driver Home



#### Vehicle Type

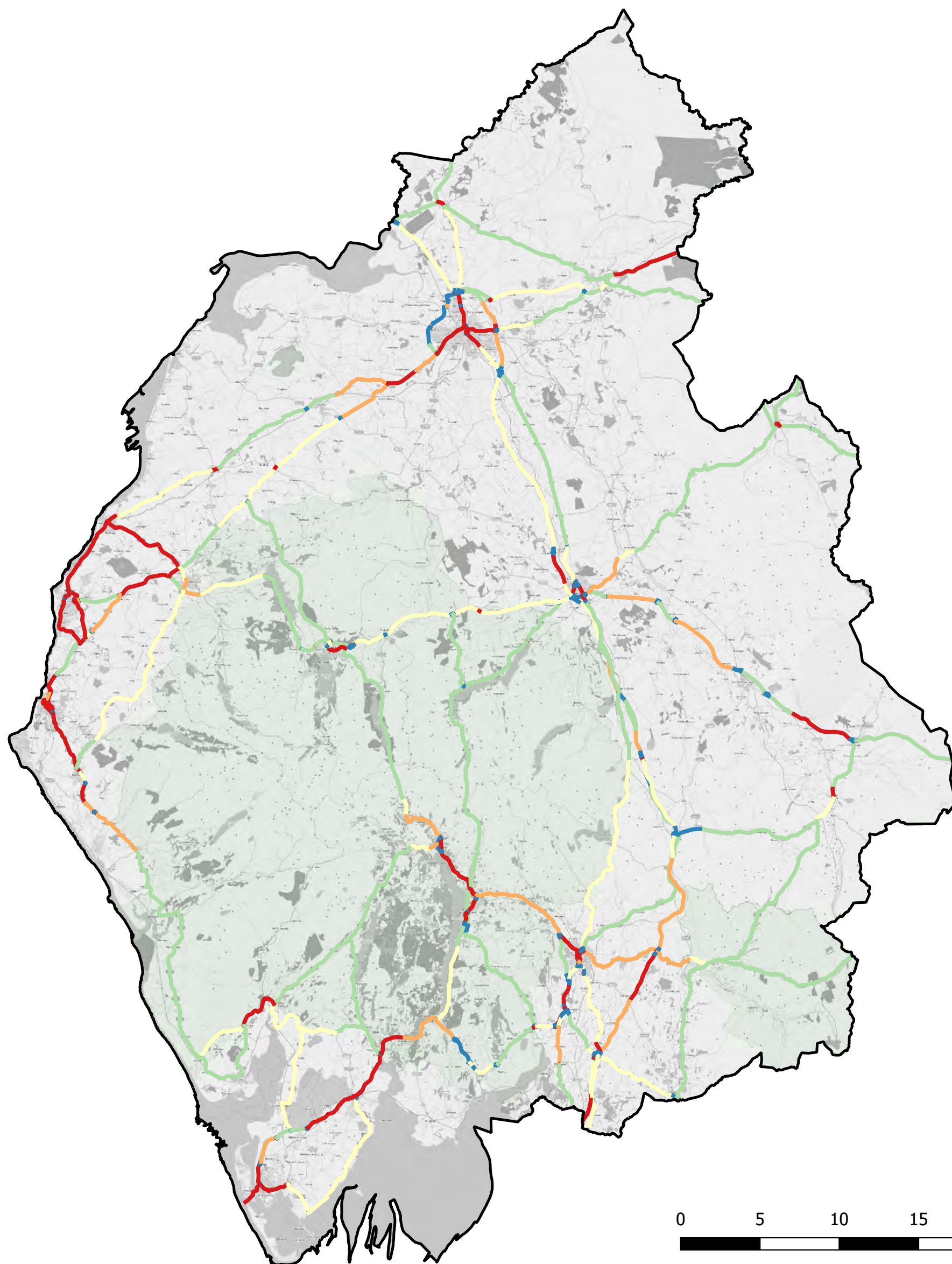


<http://www.jenoptik.co.uk/pcc>

DATA AND DESIGN BY



# Cumbria Constabulary



## Crash Rate Index

- Insufficient Data
- 0 to 70
- 71 to 100
- 101 to 130
- 131 and over

